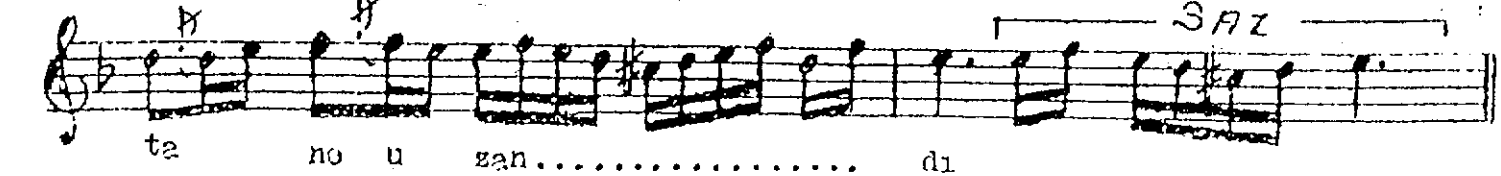
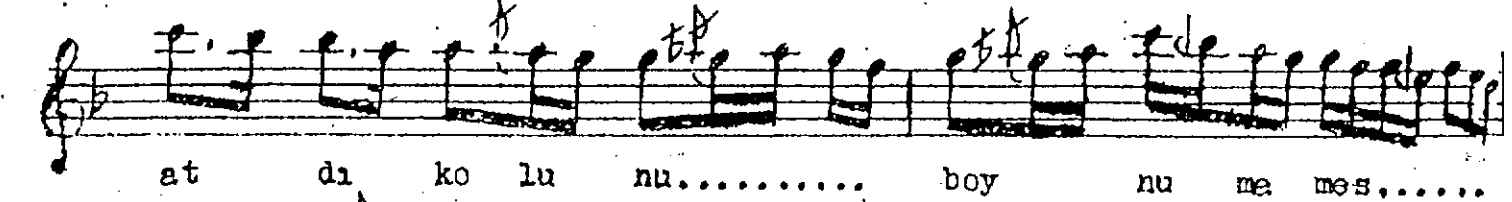
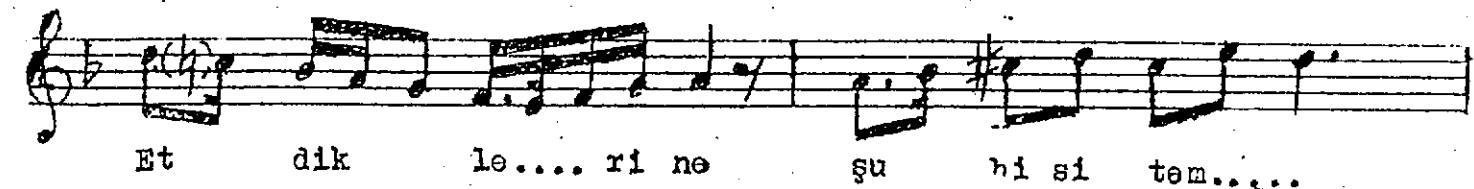
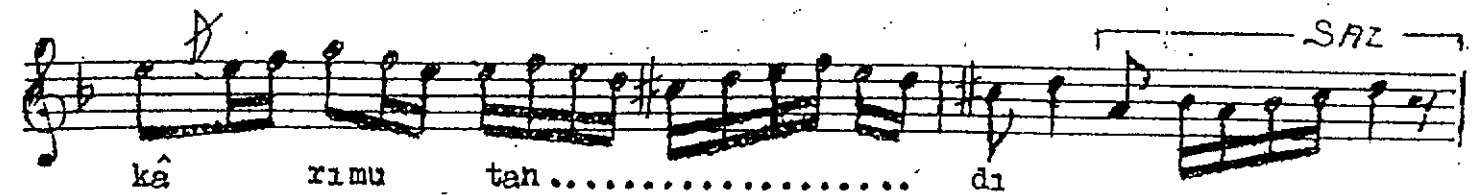
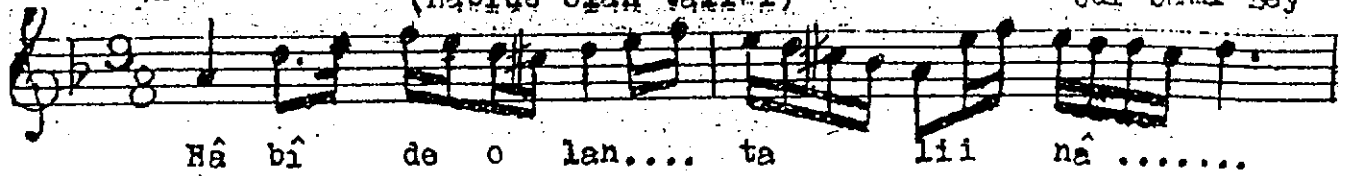
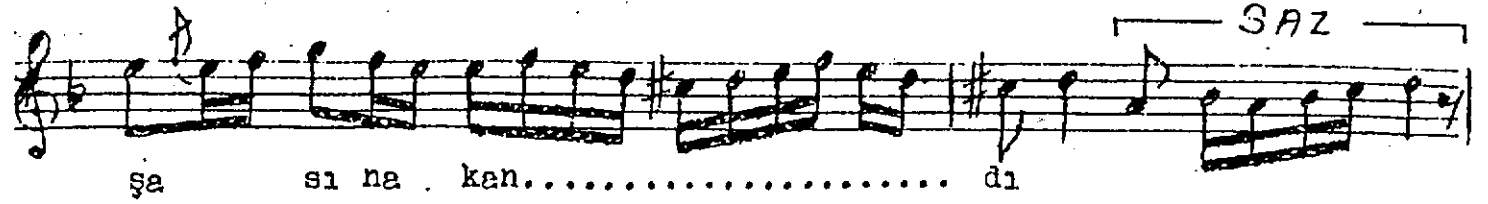


SULTANİYEĞÂH ŞARKI
(Hâbîde olan tâli-1)

Aksak

Udi Sâmi Bey





Hâbîde olan tâlî-i nâ-sâzım uyandı
Ettiklerine şuh-i sitem-kârım utandı
Atdı kolunu boynuma mestânô uzandı
Dil vuslatınâ dîde temâşâsına kandı.

Dîde - Göz
Temâşâ - Seyir (otmak)

Hâbîde - Uyuyan
Nâ-sâz - Düzensiz
Şuh - neş'eli, işveli güzel
Mestânô - most olarak,
zevkle kendinden geçere
Dil - Gönül
Vuslat - Sovgîlîlerin
boraborl